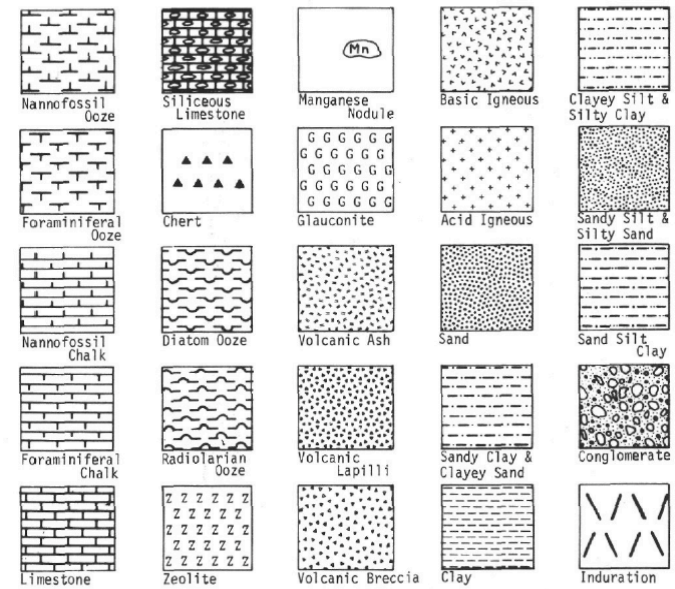
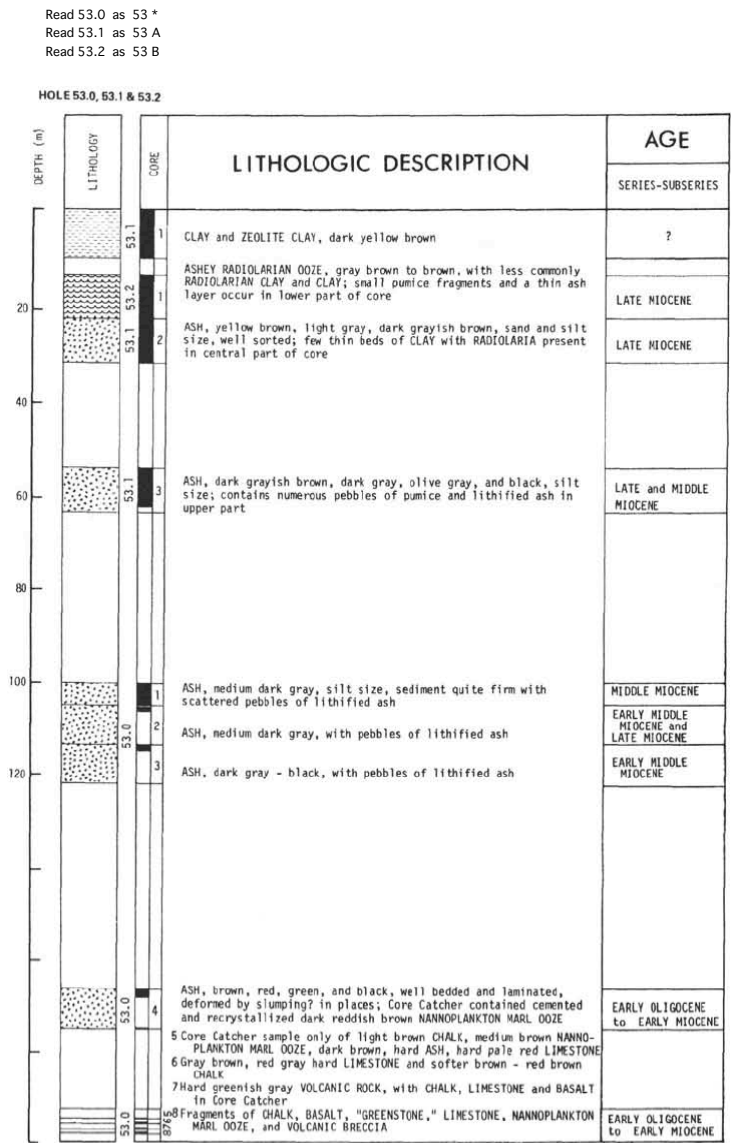


| Unit | Lithology | Estimated Thickness |
|------|--|--------------------------|
| A | Yellow brown clay and zeolitic clay | 13 meters |
| B | Brown to gray silty radiolarian ooze with volcanic glass | 8 meters |
| C | Gray to gray brown volcanic ash | approximately 153 meters |
| D | Red to brown chalk ooze and nannoplankton chalk ooze, apparently interlayered with lithified limestone | approximately 21 meters |
| E | Volcanic rocks interbedded with limestone | unknown |

Lithological units of Leg 6, Site 53



- S - sponge spicule
- G1 - volcanic glass (ash)
- Py - pyrite
- Q - quartz
- Fl - feldspar
- Fe - secondary iron oxide
- Sf - silicoflagellates
- M - mica
- Pyr - pyroxene
- C.Sp. - calcareous (sponge) spicules
- Ca - calcite (authigenic)
- (Mn) nodule → e.g. (Py) - pyrite nodule
- sh shell fragment (macro)
- sh complete shell (macro)

Figure 5. Standard symbols used to illustrate lithology.